



G-STEP
Innovating / Training / Collaborating

*Promoting the use of satellite, aerial
and ground monitoring earth
observation data in order to improve
regional competitiveness*

What is G-STEP?

Global Monitoring for Environment and Security (GMES) Space Technology Exchange Partnership

- University of Leicester Project
- Part-financed by the ERDF
- Partner in DORIS_Net (FP7 downstream observatory project)

What does G-STEP do?

Promote the use of GIS and Earth Observation (especially satellite) data for SMEs to improve their business

- Knowledge transfer
- Access to data
- Bespoke business solutions
- Innovation

We provide:

- Free Training
- Free Data
- Free Advice and Guidance
- Graduate Placements
- Funding Opportunities
- National and European Business Links

Events



University of
Leicester



Project Part-Financed
by the European Union
European Regional
Development Fund



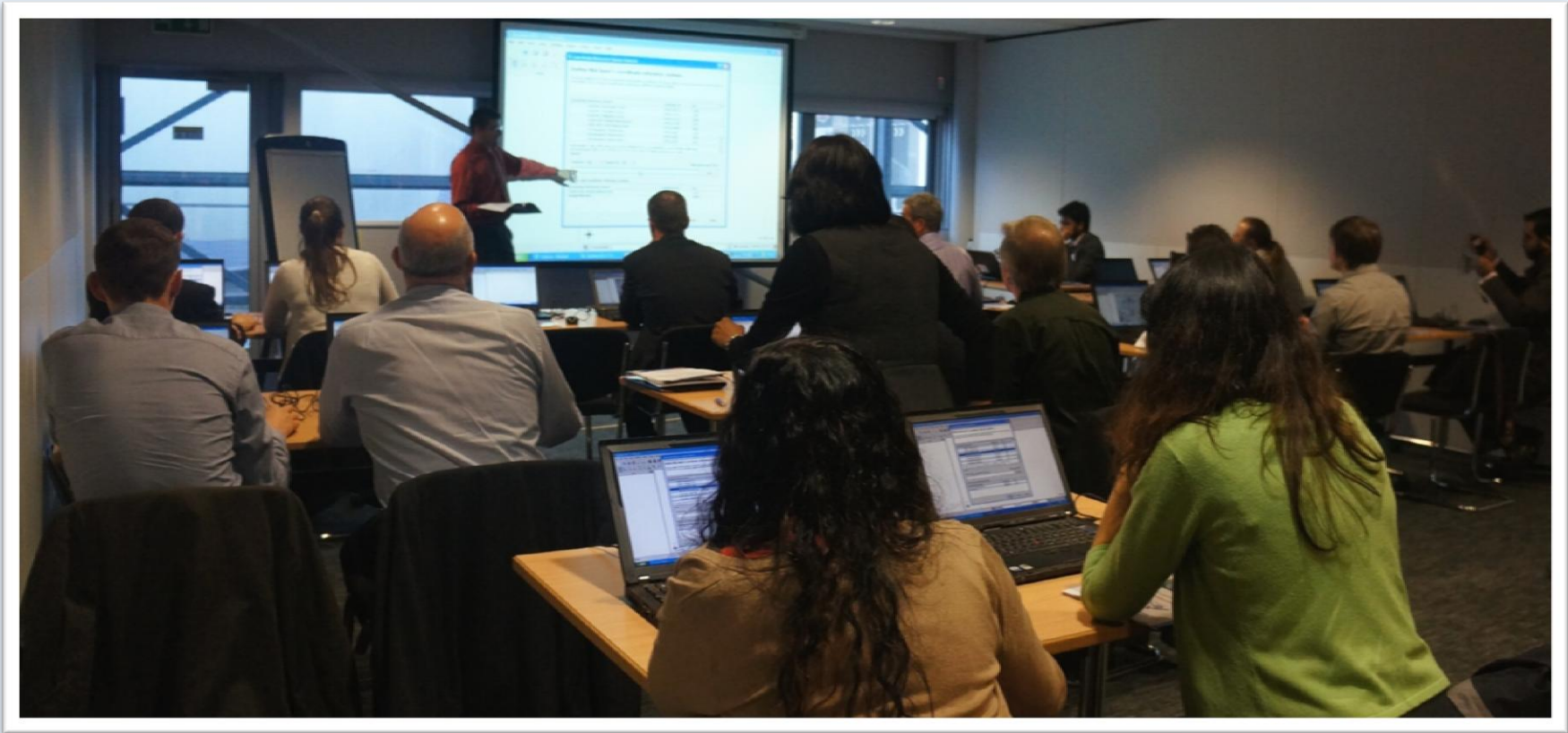
east midlands
competitiveness programme
european regional development fund



Global To Local



Global To Local



University of
Leicester



Project Part-Financed
by the European Union
European Regional
Development Fund



east midlands
competitiveness programme

european regional development fund



Business Breakfasts



IG-STEP
Innovating / Training / Collaborating

University of Leicester

Earth Observation for Business

Solar Panels: location, location, location!

Tuesday 1st February 2011
Business Breakfast Event 7.30-10.30

Project Part-Financed by the European Union European Regional Development Fund

prospect east midlands competitiveness programme european regional development fund

IG-STEP
Innovating / Training / Collaborating

University of Leicester

Earth Observation for Business

Introduction to Geographical Information System (GIS)

Map? Photograph?

University of Leicester

IG-STEP
Innovating / Training / Collaborating

G-STEP Business Meets Space Workshop

"Monitoring, mapping & visualising your world"

Specialists in the field of earth Observation, together with end-users within industry, will present examples where space based information is being used to enhance current business methods. Emerging opportunities will be highlighted, illustrating how space data are being used to enhance business competitiveness and provide new opportunities for service development.

"Boosting business from space"

Keynote presentations will cover applications of space, airborne and in-situ geospatial technologies including:

- o Application of satellite monitoring to aid land use management, and how such technology can help safeguard the environment,
- o Management of urban traffic congestion and air quality,
- o Demonstration of space applications to monitor and manage the built environment and how such systems can be used to aid the building industry and urban planning.

will also provide:

- o opportunities with space experts in Earth imaging and satellite navigation,
- o engage with geographical data analysis software for mapping and visualization data and imagery,
- o develop partnerships with business and academia in the space end-user sector,
- o on identifying and applying for regional and European funding opportunities.

to be completed online at <http://businessmeetsspace.eventbrite.com>

Thursday 20th January 2011
National Space Centre, Expedition Drive, Leicester, LE4 5NS, UK

Project Part-Financed by the European Union European Regional Development Fund

prospect east midlands competitiveness programme european regional development fund

IG-STEP
Innovating / Training / Collaborating

University of Leicester

Earth Observation for Business

Pictures and Processing: What's Free

Wednesday 1st December 2010
Business Breakfast Event 7.30-10.00 am
G-STEP Offices, Leicester, LE1 7DF

Join us for a **FREE** breakfast seminar to discover how this emerging technology can revolutionise your business!



Projects



University of
Leicester



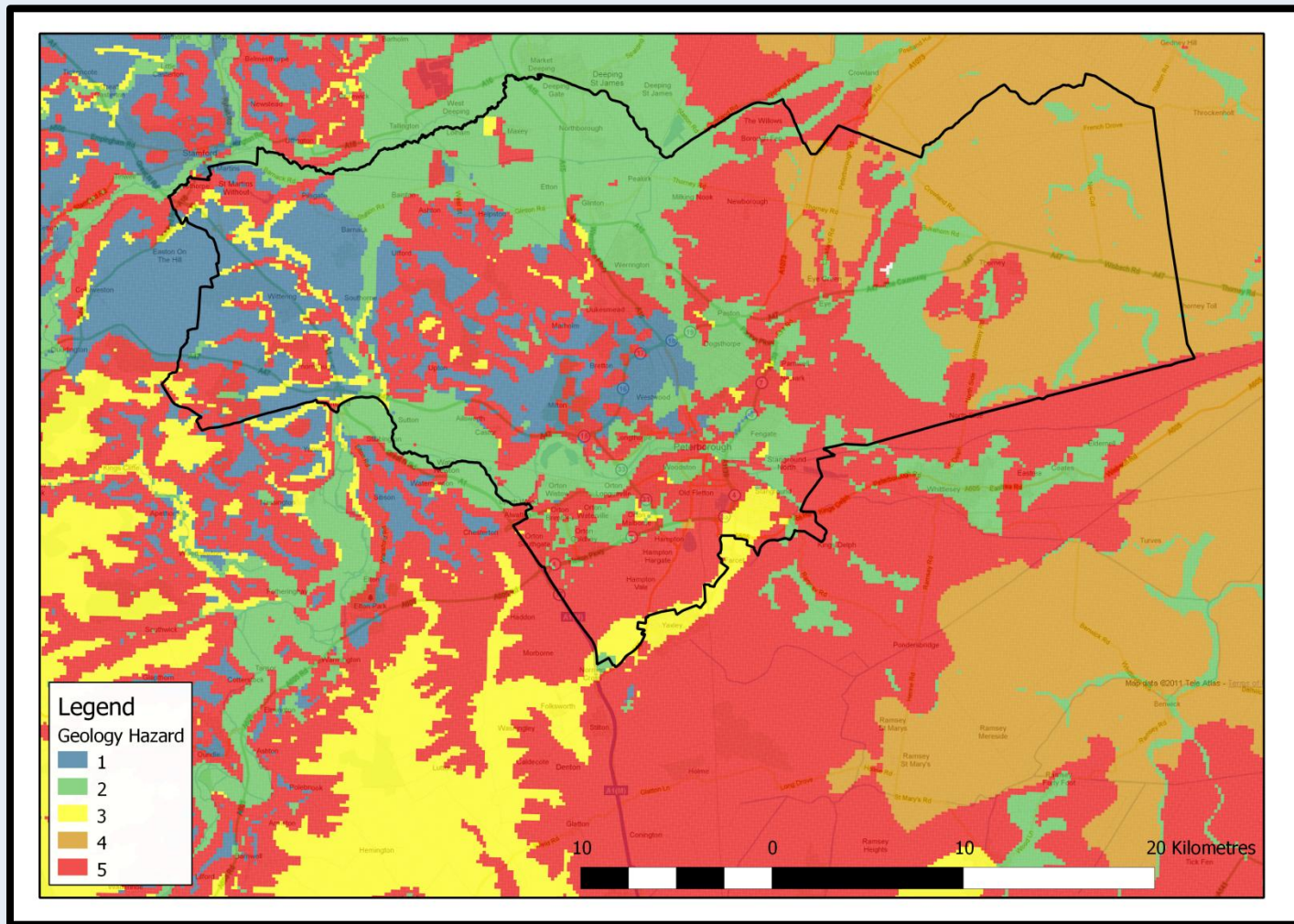
Project Part-Financed
by the European Union
European Regional
Development Fund



east midlands
competitiveness programme
european regional development fund



Subsidence Risk



Crime Mapping

POLICE.UK
Leicester LE1 7DF, UK

Overview
Crime maps
Meet the team
Get involved
Information and advice
Help
Feedback
Data
Police apps

Crime and ASB in this area in September 2011 [Give information about a crime >](#)

Crime types
Streets
Neighbourhood

Street-level crime and ASB in September 2011
 Grouped by crime types. To protect privacy, individual addresses are not pinpointed on the map. Crimes are mapped to an anonymous point on or near the road where they occurred.

All crime and ASB
1414

To show crimes of a specific type click on the links below. To view details of individual crimes click the markers on the map.

Burglary	74
Anti-social behaviour	372
Robbery	24
Vehicle crime	77
Violent crime	182
Public Disorder and Weapons	53
Shoplifting	162
Criminal damage and Arson	100
Other Theft	323
Drugs	26
Other crime	21

Automated Tree Mapping **G-STEP** incubating / Training / Collaborating



University of
Leicester



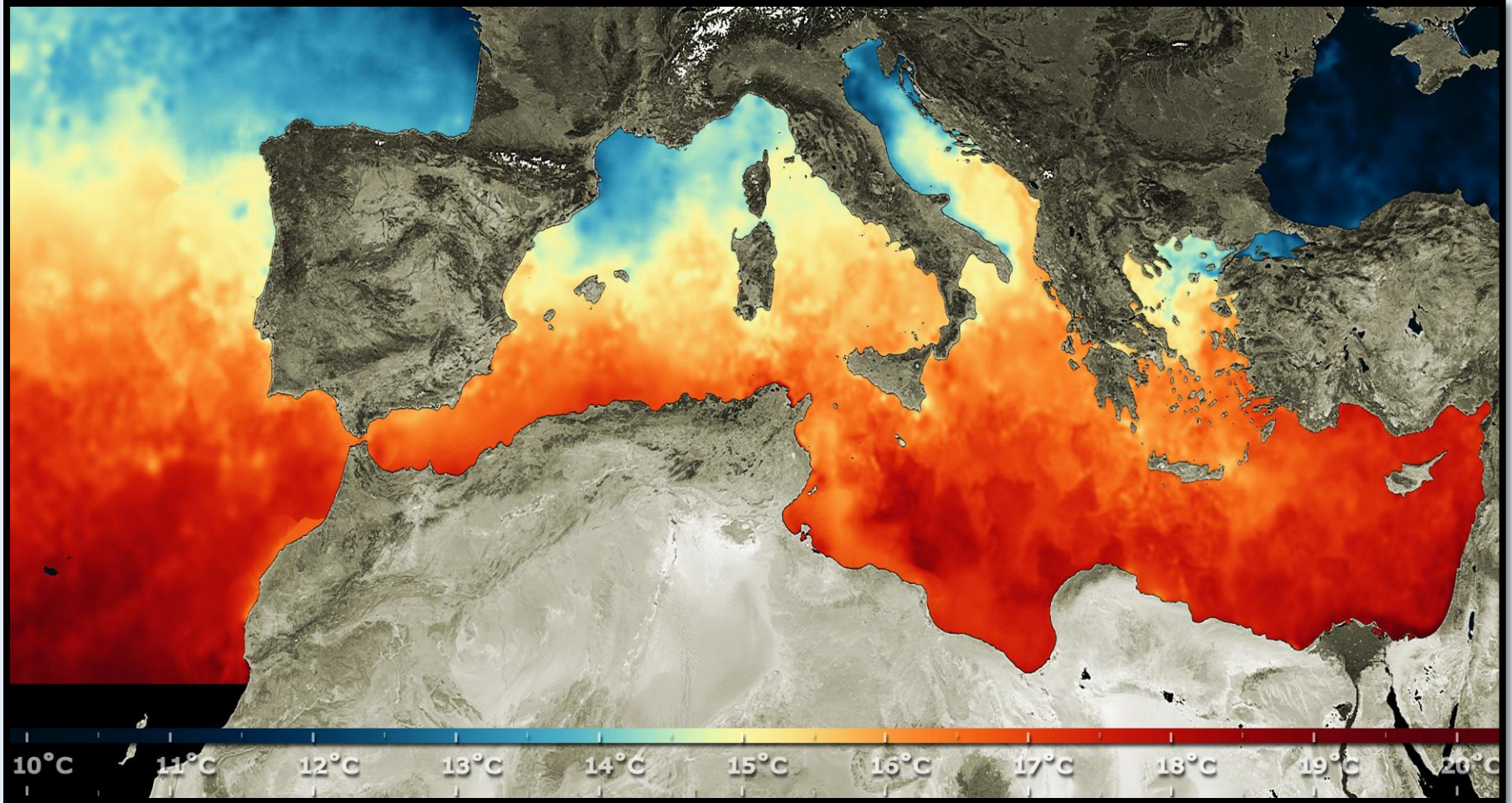
Project Part-Financed
by the European Union
European Regional
Development Fund



east midlands
competitiveness programme
european regional development fund



What can we do from Space?





Multispectral Images

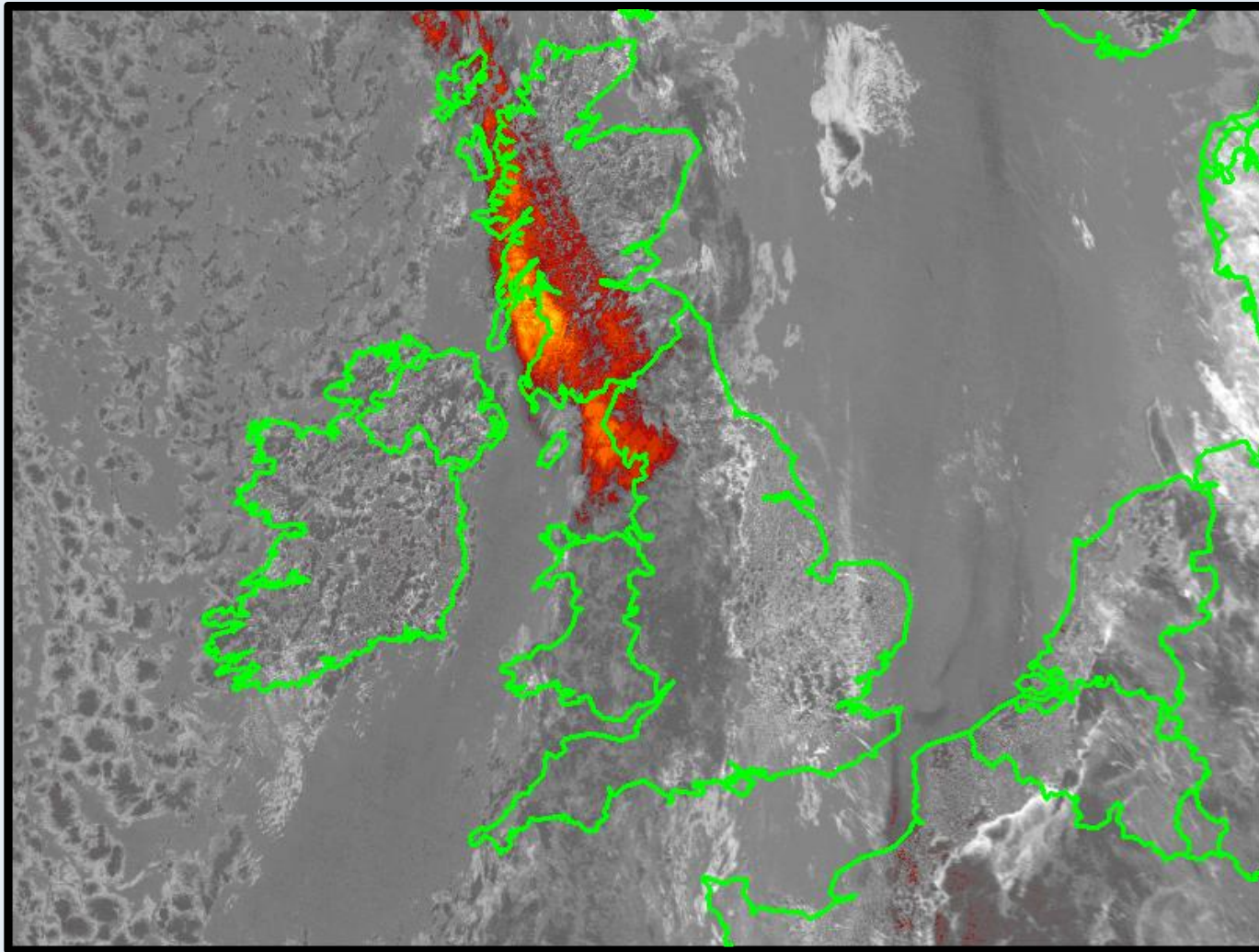


Satellite Image of Leicester 1985 (Landsat 7)



Satellite Image of Leicester 2000 (Landsat 7)





- Outside support from e.g. University department, other businesses



G-STEP
Innovating / Training / Collaborating

www.g-step.co.uk



University of
Leicester



Project Part-Financed
by the European Union
European Regional
Development Fund



east midlands
competitiveness programme
european regional development fund

